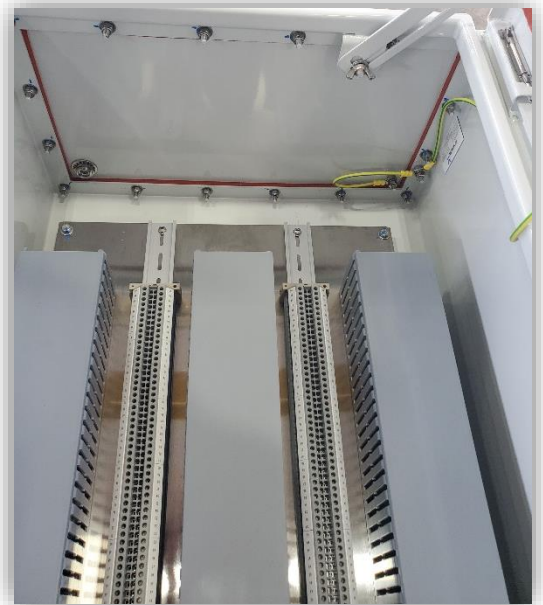


## Model Series 30AH-JBOX-TBZ1 Specifications

- IECEx CML 20.0084X
- CML 20ATEX3094X
- CML 21UKEX3640X
  - II 2 G D
  - Ex db eb op pr [op is] IIC T4 Gb
  - Ex db eb IIC T4 Gb
  - Ex eb IIC T6...T4 Gb
  - Ex eb op pr [op is] T6...T4 IIC Gb
- AMBIENT TEMPERATURE RATING:
  - -20°C TO +40°C...60°C
- INGRESS PROTECTION
  - IP66
- TYPE of PROTECTION
  - Increased Safety Ex “e”
  - Optional: Optical Radiation Ex “op pr”, “op is”
  - Flameproof Ex “d” – with optional heater
- RATING:
  - 1000VAC Max
  - Max amperage dependent on specifications & needs



The Low Voltage Model Series: 30AH-JBOX-TBZ1 come with an internal and external threaded earth stud and fitted with an arrangement of terminals.



## Modification and Design Options



- CUSTOMIZED CONFIGURATIONS TO MEET DESIGN NEEDS:
  - Optional anti-condensation heater and thermostat sub-assembly
  - Fibre optic jointing facilities
  
- JUNCTION BOX SIZES AVAILABLE:
  - Standard sizes available based on power consumption and terminal size/quantity
  - Custom enclosure sizes available per end-user requirements
  - Maximum dimensions: 100"(L) x 100"(W) x 69"(D)
  
- DESIGN DOCUMENTS:
  - All drawings, general arrangements, and operations/maintenance manual information are supplied with all builds.

- MATERIAL

- Enclosure constructed of 316 stainless steel

- COATING OPTIONS

- Epoxy Coating
  - Powder Coating

