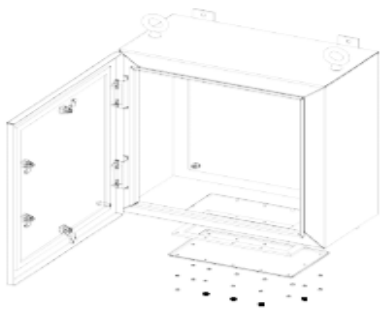


GENERAL ARRANGEMENT

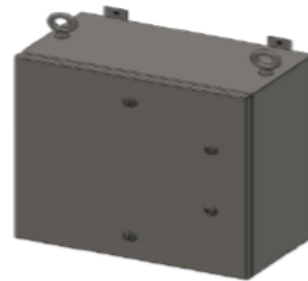
DESIGNED TO PROVIDE A SAFE OPTION FOR HOUSING COMPONENTS IN HAZARDOUS AREAS FOR PROTECTION AGAINST DUST, LIQUIDS, AND HAZARDOUS GASES.



ISOMETRIC DETAIL VIEW



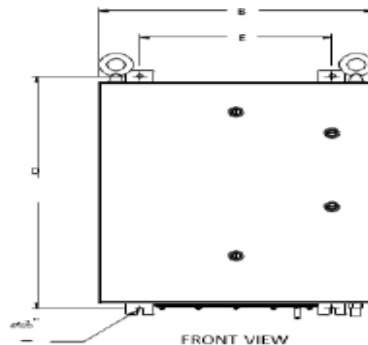
CONCEALED DETACHABLE HINGE



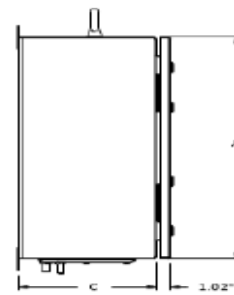
ISOMETRIC VIEW



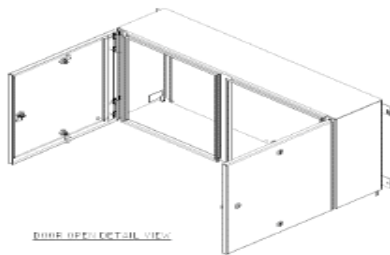
BOTTOM VIEW



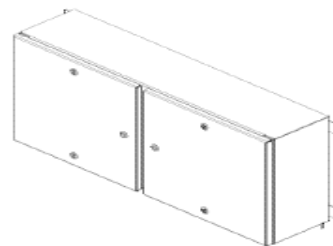
FRONT VIEW



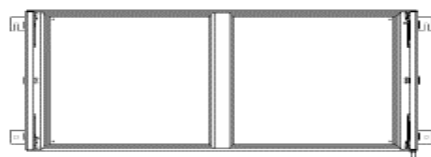
LEFT SIDE VIEW



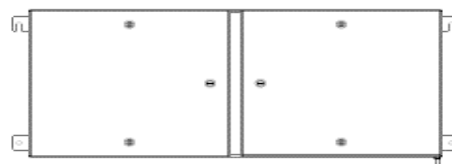
DOOR OPEN DETAIL VIEW



DOOR CLOSED DETAIL VIEW



DOOR OPEN DETAIL VIEW



DOOR CLOSED DETAIL VIEW

SPECIFICATIONS

CERTIFICATIONS

- ▶ ATEX CML 18ATEX3382U
 - II 2G Ex eb IIC Gb
 - II 2D Ex tb IIC Db
- ▶ IECEx CML 18.0201U
 - Ex eb IIC Gb
 - Ex tb IIC Db
- ▶ UL/cUL:
 - E507964
 - Type 4/4X
- ▶ AMBIENT TEMPERATURE RATING:
 - -35°C TO +70°C
- ▶ FOR USE IN:
 - Zone 1 or 2
 - Class 1 Division 2
- ▶ INGRESS PROTECTION:
 - IP66

MISC

- ▶ LATCHES:
 - Quarter Turn Latch IP66
- ▶ HINGES:
 - Detachable SS Hinge
 - Reinforced SS Hinge
- ▶ GROUNDING:
 - All Bodies Except Back Plate Contain Independent Grounding Studs

PANEL SIZE

- ▶ HEIGHT:
 - MAX = 100" (1828.8) | MIN = 12" (304.8)
- ▶ WIDTH:
 - MAX = 100" (1219.2) | MIN = 08" (203.2)
- ▶ DEPTH:
 - MAX = 69" (762) | MIN = 04" (101.4)

MATERIAL

- ▶ PANEL BODY CONSTRUCTED OUT OF:
 - 12GA 316SS (Minimum)
- ▶ PANEL DOOR CONSTRUCTED OUT OF:
 - 12GA 316SS (Minimum)
- ▶ GLAND PLATE CONSTRUCTED OUT OF:
 - 12GA 316SS (Minimum)
- ▶ BACKPLATE CONSTRUCTED OUT OF:
 - 12GA 316SS (Minimum)
- ▶ MOUNTING FEET:
 - 10GA 316SS (Minimum)
- ▶ WELDS:
 - Continuous, Ground Smooth
- ▶ FINISH:
 - 4 Brushed
 - Optional Paint and Powder Coating
- ▶ DOOR AND GLAND PLATE GASKETING:
 - Heavy Duty High Density Gasket
- ▶ GROUNDING STUD EXTERNAL:
 - 3/8" Grounding Stud Minimum
- ▶ GROUNDING STUDS INTERNAL:
 - 3/8" Grounding Stud Minimum

MODIFICATION AND CUSTOMIZATION

- ▶ AT REQUEST WE CAN MODIFY OR CUSTOMIZE THE ENCLOSURE TO MEET END USERS NEEDS:
 - Can Provide Certified Type Approval or Unit Verification for Customers