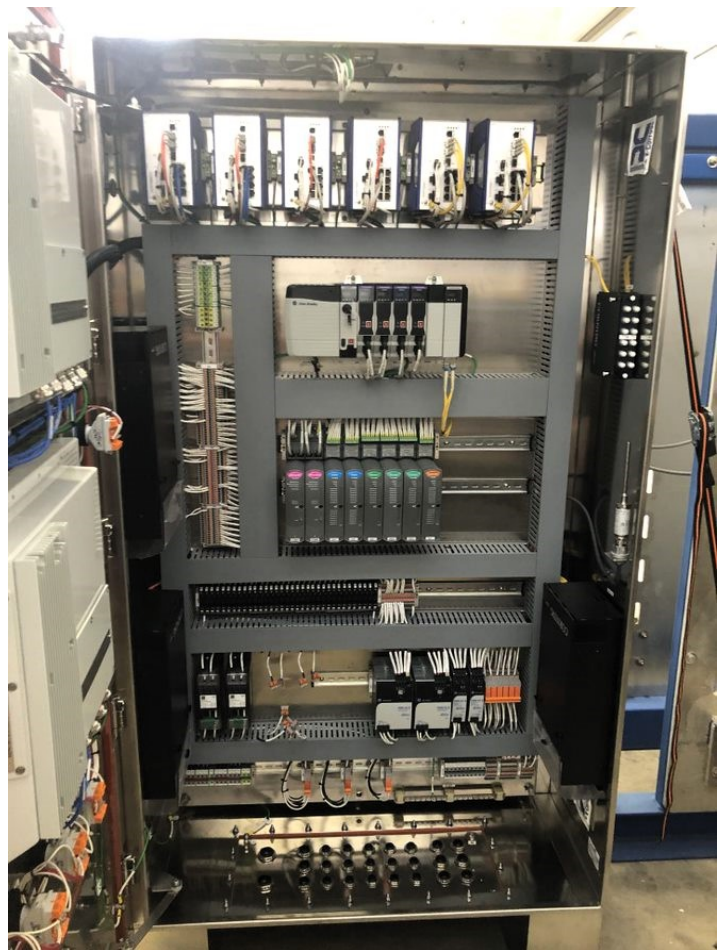




INCREASED SAFETY PANEL Ex E

GENERAL ARRANGEMENT

DESIGNED TO PROVIDE A SAFE OPTION FOR HOUSING COMPONENTS IN HAZARDOUS AREAS FOR PROTECTION AGAINST DUST, LIQUIDS, AND HAZARDOUS GASES.





braeden.com

1.877.721.4055

SPECIFICATIONS

CERTIFICATIONS

- ▶ **ATEX CML 18ATEX3382U**
 -  II 2G Ex eb IIC Gb
 -  II 2D Ex tb IIC Db
- ▶ **IECEX CML 18.0201U**
 - Ex eb IIC Gb
 - Ex tb IIC Db
- ▶ **UL/cUL:**
 - E507964
 - Type 4/4X
- ▶ **AMBIENT TEMPERATURE RATING:**
 - -35°C TO +70°C
- ▶ **FOR USE IN:**
 - Zone 1 or 2
 - Class 1 Division 2
- ▶ **INGRESS PROTECTION:**
 - IP66

MISC

- ▶ **LATCHES:**
 - Quarter Turn Latch IP66
- ▶ **HINGES:**
 - Detachable SS Hinge
 - Reinforced SS Hinge
- ▶ **GROUNDING:**
 - All Bodies Except Back Plate Contain Independent Grounding Studs

PANEL SIZE

- ▶ **HEIGHT:**
 - MAX = 100" (1828.8) | MIN = 12" (304.8)
- ▶ **WIDTH:**
 - MAX = 100" (1219.2) | MIN = 08" (203.2)
- ▶ **DEPTH:**
 - MAX = 69" (762) | MIN = 04" (101.4)

MATERIAL

- ▶ **PANEL BODY CONSTRUCTED OUT OF:**
 - 12GA 316SS (Minimum)
- ▶ **PANEL DOOR CONSTRUCTED OUT OF:**
 - 12GA 316SS (Minimum)
- ▶ **GLAND PLATE CONSTRUCTED OUT OF:**
 - 12GA 316SS (Minimum)
- ▶ **BACKPLATE CONSTRUCTED OUT OF:**
 - 12GA 316SS (Minimum)
- ▶ **MOUNTING FEET:**
 - 10GA 316SS (Minimum)
- ▶ **WELDS:**
 - Continuous, Ground Smooth
- ▶ **FINISH:**
 - 4 Brushed
 - Optional Paint and Powder Coating
- ▶ **DOOR AND GLAND PLATE GASKETING:**
 - Heavy Duty High Density Gasket
- ▶ **GROUNDING STUD EXTERNAL:**
 - 3/8" Grounding Stud Minimum
- ▶ **GROUNDING STUDS INTERNAL:**
 - 3/8" Grounding Stud Minimum

MODIFICATION & CUSTOMIZATION

- ▶ **AT REQUEST WE CAN MODIFY OR CUSTOMIZE THE ENCLOSURE TO MEET END USERS NEEDS:**
 - Can Provide Certified Type Approval or Unit Verification for Customers