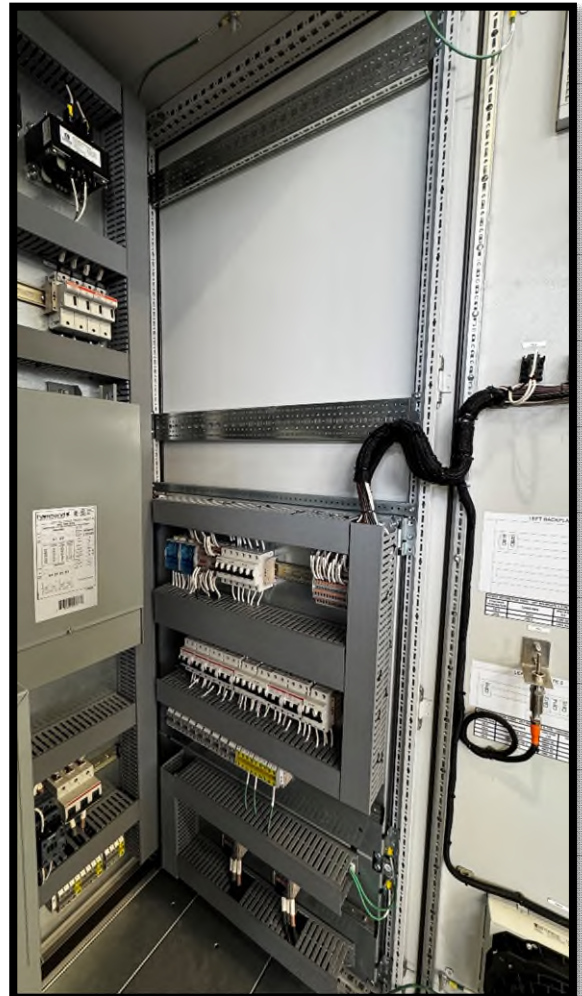


## EQUIPMENT OVERVIEW

- Dual / Redundant feeds from main supply
- PLC control system with redundant power inputs
- Automatic Failover
- Designed for critical loads, also powers ordinary loads
- Fault monitoring and Diagnostics
- Compliant with international and maritime specification
- Circuit / Load Protection and monitoring
- Fully customizable Design for variable loads, voltages or power management
- Designed to work with high output Uninterruptible Power Supplies



LEFT VIEW



RIGHT VIEW







## POWER DISTRIBUTION PANEL

The PDP's purpose is to manage the redundant supplies from the rig to the UPS via the in-panel automatic transfer switch. The PDP will also manage the output supply from the UPS to distribute power to the loads. The PDP features line direct indicators for each load, a selector switch for UPS input power selection, supply status indicators controlled by the in-panel control system, insulation monitors for each distribution voltage, internal temperature transmitter with 4-20mA output, and induced draft fans.



ISOMETRIC VIEW  
DOOR CLOSED



ISOMETRIC VIEW  
DOOR OPEN

## SPECIFICATIONS

### CERTIFICATIONS

- ▶ CE LVD, EMC
- ▶ MARKINGS: CE
- ▶ AMBIENT TEMPERATURE RATING: -20°C TO +45°C
- ▶ INGRESS PROTECTION: IP54

### INPUT CHARACTERISTICS

- ▶ SUPPLY INPUT: 690VAC 3ph, other voltages available upon request
- ▶ CURRENT INPUT: 2 X 24A @ 690VAC
- ▶ UPS INPUT: 230VAC 1ph, other voltages available upon request

### OUTPUT DISTRIBUTION VOLTAGES

- ▶ 480VAC 1ph with Control Contactors
- ▶ 120VAC 1ph
- ▶ 2 – Pole MCBs with Auxiliary Contact
- ▶ Fully isolated neutral for offshore applications in compliance with IEC 61892 and NEC article 555.
- ▶ Optional Shunt Trip and SIL – 2 feedback to 3<sup>rd</sup> party

### CONSTRUCTION

- ▶ ENCLOSURE MATERIAL: Metal Clad
- ▶ FINISH:
  - Enclosure Frame: Dipcoat-primed
  - Door, Roof, Rear Panel, Side Panels: Dipcoat-primed, powder-coated on the outside, textured paint (RAL 7035)
  - Removable Lifting Eyebolts (3200lb Rated)
  - W: 800mm, H:2000mm, D:800mm
  - Weight: ~877lbs [397.8 kg]
  - Audible Noise: < 47dB @ 3ft
  - Available User Area (H: 31", W: 18") for 3<sup>rd</sup> party interoperability plate

### OPTIONS AVAILABLE UPON REQUEST

#### ▶ DISTRIBUTION VOLTAGES

- Panels internal transformers can be modified and/or swapped to accommodate loads with supply voltages that are not supported by the current configuration
- Enclosure size can be adjusted to add additional distribution voltages to the current configuration

#### ▶ CERTIFICATIONS

- Compliant with the following: IEC 62040-1, IEC 62040-2, IEC 62040-3, IEC 61892, IEC 60533, API 16D, DNV-OS-D201, DNV-OS-E101
- Panel can be certified for hazardous area use. Enclosure and parts used in current configuration may change to accommodate the certification requested.
- Certifications include but not limited to: IECEx, ATEX, UL, DNV

#### ▶ GLAND PLATES

- Designed to secure cable glands for electrical cable to be routed into the enclosure